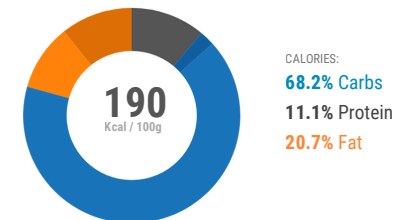
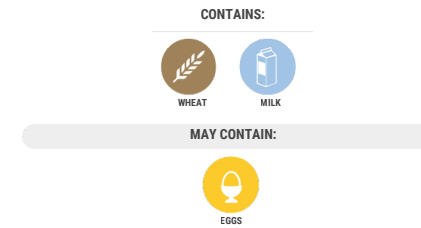


PLAIN PASTA & IRISH BUTTER

UK Label values per 100g

	PER 100G	%RI	PER 136G SERVING	%RI
Energy(Kj)	831 kJ	10%	1131 kJ	13%
Energy(kcal)	197 kcal	10%	268 kcal	13%
Fat	4.4g	6%	5.9g	8%
of which saturates	2.3g	12%	3.1g	16%
Carbohydrate	32g	12%	44g	17%
of which sugars	1.1g	2%	1.5g	2%
Fibre	2.4g	10%	3.3g	13%
Protein	5.8g	16%	7.9g	2%
Salt	0.07 g	1%	0.09 g	



Pasta (95.6%) (**Wheat**), Champion Irish Butter 454g (4.4%) [Cream (**Milk**), Salt, Minimum Fat content 80%, Salt 2% maximum, Made from: Cows **Milk**]

ALLERGY ADVICE: For allergens, see ingredients in **Bold**. May contain traces of **Eggs**